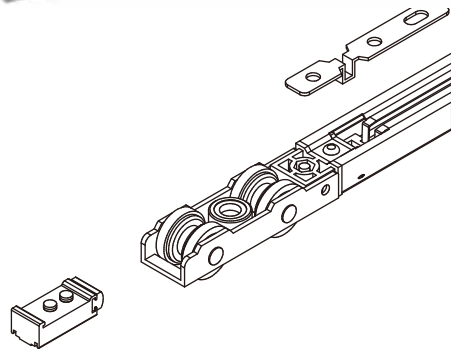


03-2 Wardrobe Sliding Door

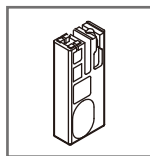
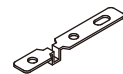
56960-30 Soft-Closing Sliding Door Fittings 56960-60 Heavy Duty version

- * For wooden door
- * 50mm Soft-Closing stroke
- * Loading capacity: 30 kg(56960) or 60 kg(56965) per door
- * Double-action soft-closing door requires at least 95mm width of door panel

5696T Soft-closing Top-hung Gear set
* 50mm Soft-Closing stroke

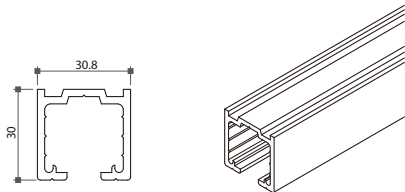


56960S Stopper

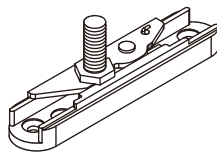


* Assisted installation tooling

5696-Track Top track, aluminium

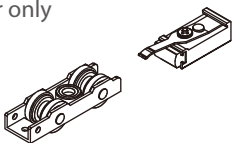


5696Q Quick Release Base

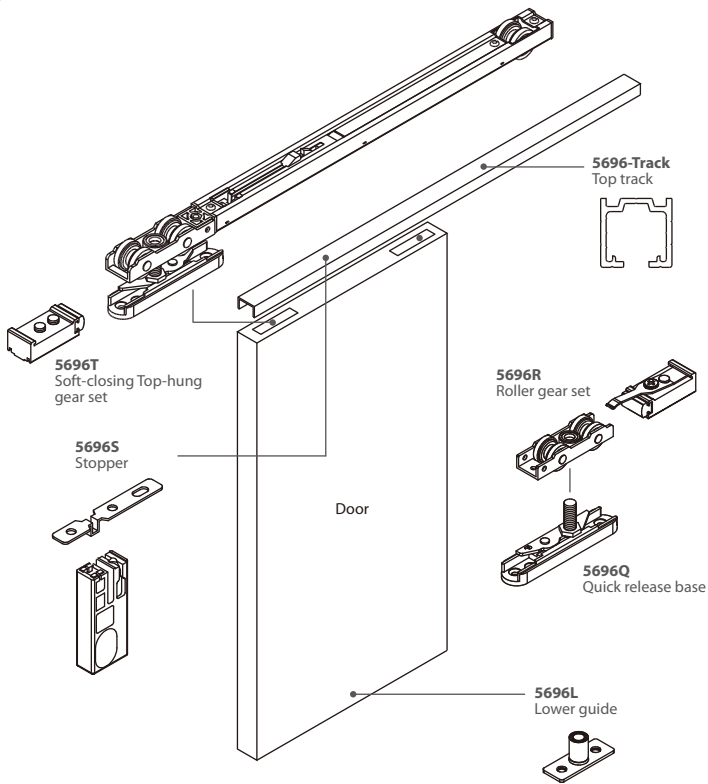
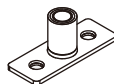


5696R Roller Gear Set

* Used for single-action soft-closing door only



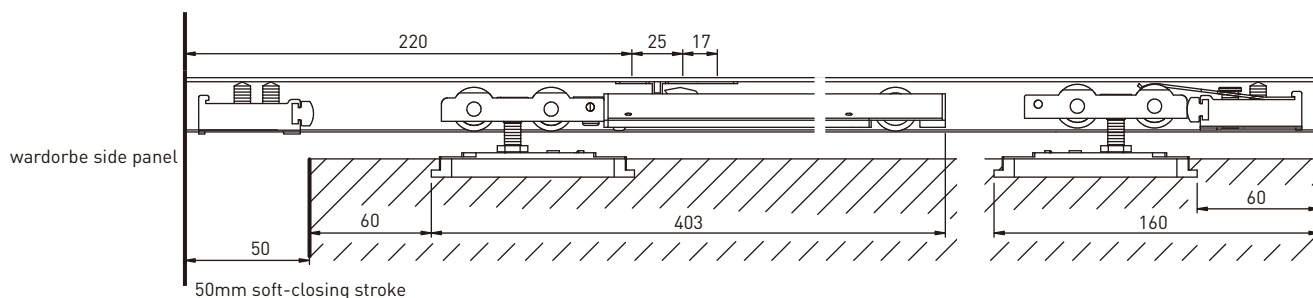
5695L Lower guide



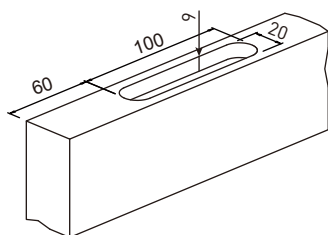
Applications	Fittings	Top Track	Soft-closing top-hung Gear set	Roller Gear Set	Base	Guide
Single action soft-closing door		To be specified	1 set	1 set	2 pcs	1 pc
Double action soft-closing door		To be specified	2 set	0 set	2 pcs	1 pc

03-2 Wardrobe Sliding Door

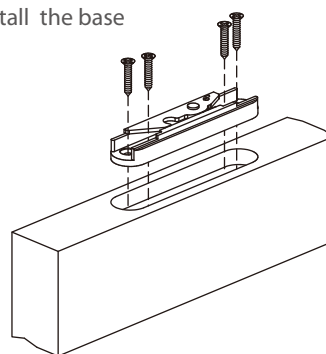
Mounting Instruction of 56960



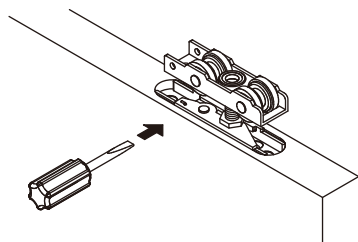
Step 1 Measure and groove



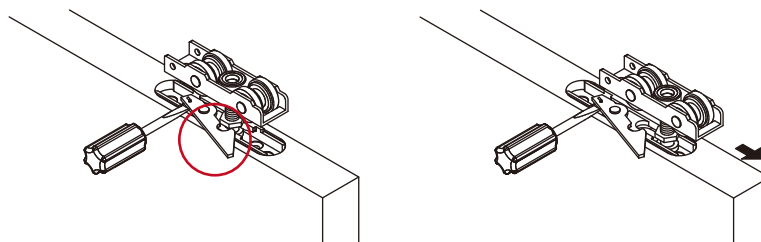
Step 2 Install the base



Step 3 Connect the roller gear with base



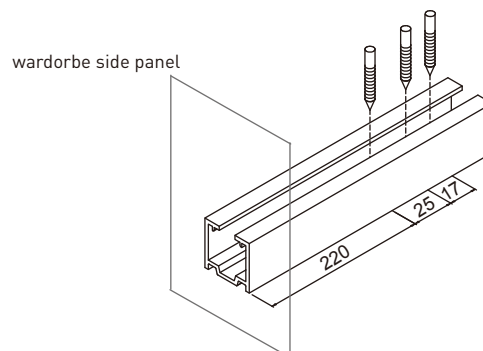
Step 4 Expand the hook of base over the drilling hole



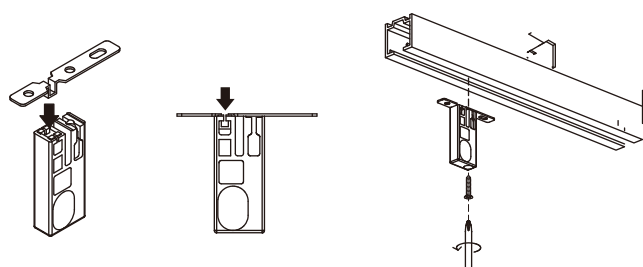
¡This hook should be over the drilling hole and moved freely!



Step 5 Drill three holes on the track according to dimensions below



Step 6 Fix stopper



* Assisted installation tooling for fixing the stopper

Step 7 Before installation, make sure the hook of soft-closing system is in the front

