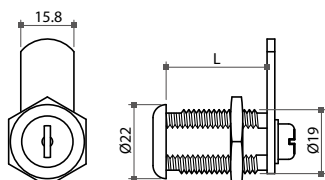
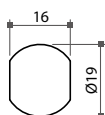


# 05-1 Cam Locks

## Plastic Cam Lock

- \* Ø19mm drilling hole
- \* Material: ABS plastic cylinder
- \* Finish: chrome or black plated
- \* With a removable screw-fixing cam
- \* Available in K/A (key alike), K/D (key different) and master key system

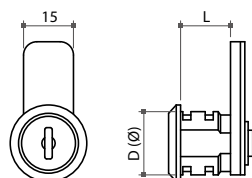


Item No.	L
68421	16mm
68422	22mm
68423	28mm



## 68621 Case Cam Lock

- \* For metal cabinet
- \* Material: zinc alloy
- \* Finish: nickel plated
- \* Accessory: 1 pc of spring clip

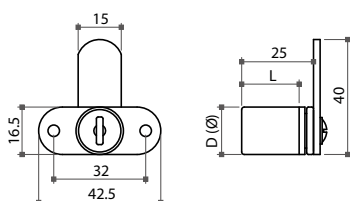


Item No.	Cylinder size (DxL)
68621	Ø19x15mm



## 68625 Cam Lock with Mounting Flange

- \* Hook cam type
- \* Material: zinc alloy
- \* Finish: nickel, brass or black plated
- \* Accessories: 1 pc of rosette and 1 pc of M3x10mm screw
- \* Available in K/A (key alike), K/D (key different) and master key system



Item No.	Cylinder size (DxL)
68625	Ø16.5x20mm

