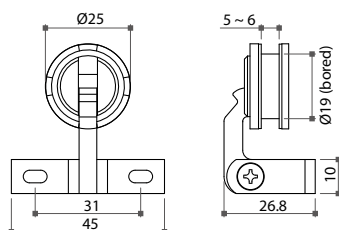


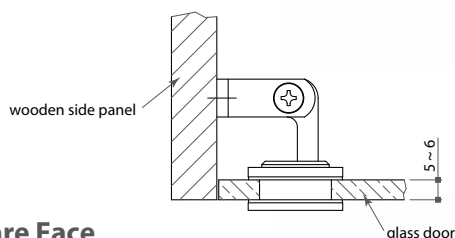
07-1 Glass Door Hinges

21884 Cabinet Glass Door Hinge, Round Face

- * Material: solid brass / zinc alloy
- * For 5 ~ 6mm thick inset glass door with Ø19mm borehole
- * 3 kgs load with catch in closed position
- * Ø25mm round face in polished chrome, satin chrome or polished brass

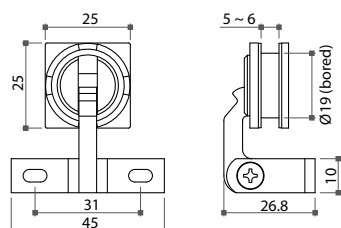


Item No.	Glass thickness
21884	5 ~ 6mm



21886 Cabinet Glass Door Hinge, Square Face

- * Material: solid brass / zinc alloy
- * For 5 ~ 6mm thick inset glass door with Ø19mm borehole
- * 3 kgs load with catch in closed position
- * Square face 25x25mm in polished chrome, satin chrome or polished brass

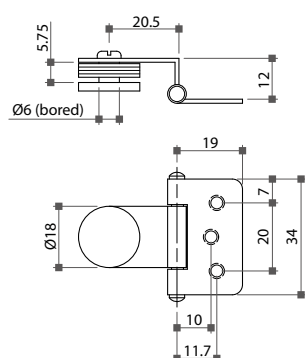


Item No.	Glass thickness
21886	5 ~ 6mm



21880 Cabinet Glass Door Hinge

- * Material: steel hinge with brass button
- * Finish: black, brass or chrome plated
- * For max. 5mm thick glass and Ø6mm borehole



Item No.	Glass thickness
21880	max. 5mm

