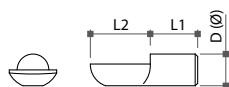


## 07-4 Shelf Supports & Fittings

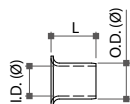
### Spoon Shelf Supports

- \* Material: steel
- \* Finish: brass or nickel plated



### Sleeves

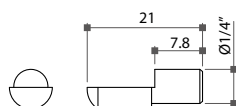
- \* Material: steel
- \* Finish: brass or nickel plated



| Item No. | D     | L1    | L2   | Item No. | I.D.  | O.D.   | L   |
|----------|-------|-------|------|----------|-------|--------|-----|
| 58290    | Ø5mm  | 8mm   | 10mm | 58275    | Ø5mm  | Ø5.5mm | 6mm |
| 58291    | Ø1/4" | 9.5mm | 12mm | 58271    | Ø1/4" | Ø7.2mm | 8mm |
| 58292    | Ø6mm  | 8mm   | 10mm | 58273    | Ø6mm  | Ø6.9mm | 8mm |

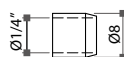
### 58350 Solid Brass Shelf Support

- \* Finish: original color or nickel plated
- \* Ø1/4" pin



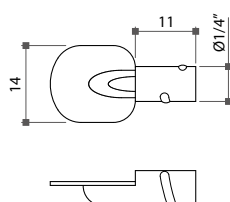
### 58360 Solid Brass Bushing

- \* Finish: original color or nickel plated



### 58280 Spoon Shelf Support

- \* Material: steel
- \* Ø1/4"x11mm pin
- \* Finish: nickel plated



### 58524 Shelf Retainer

- \* For insertion in Ø5mm hole at 32mm intervals
- \* Material: plastic
- \* Color: white
- \* For shelf of 16mm thickness

