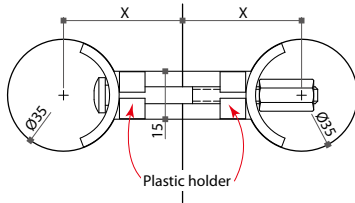


10-1 Table Connectors

Work Surface Connector

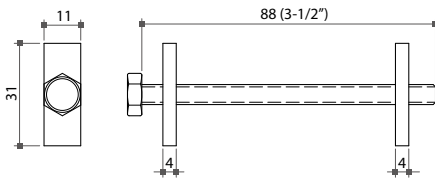
- * Material: steel
- * Finish: zinc plated
- * One set consists of:
2 C type plates, 1 hex nut and 1 bolt
- * Additional flexible plastic holders for 15mm channel is available upon request



Item No.	Bolt length	X size
10621	65mm	32 ~ 41mm
10622	150mm	75 ~ 84mm
1062SH	flexible plastic holder	

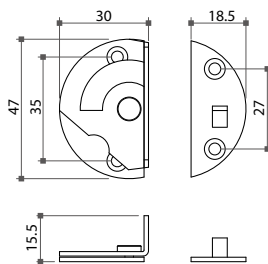
10642 Work Surface Fastener

- * Material: steel
- * Finish: zinc plated
- * One set consists of:
1 bolt (1/4-20x3-1/2" L.)
1 rectangular washer (11mm W.x31mm L.x4mm T.)
1 rectangular nut (11mm W.x31mm L.x4mm T.)



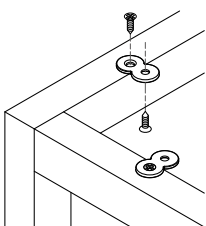
63671 Table Top Swivel Bolt

- * Screw mount under table top
- * Steel in bronze or yellow zinc plating
- * 2 pcs/set



50127 Connecting Plate

- * Steel, zinc plated
- * Dimension: Ø16.5x29x2mm



can also be used to connect table tops onto frames and carcasses

