

# 12-3 Medical & Industrial Castors

## MSC Medical Single Wheel Castor

- \* Plastic housing of polyamide and glass fiber
- \* PP wheel with TPE tread
- \* Cover in PP
- \* **Waterproof** stainless steel stem and swivel resists rust
- \* Applicable to medical, industrial, bathroom, kitchen and outdoor equipments



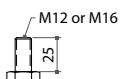
non-brake



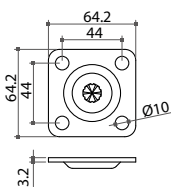
double brake  
(total locking)

### Stem Type:

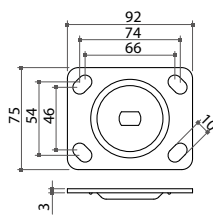
#### A) Thread Bolt stem:



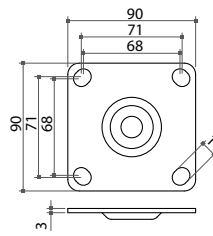
#### B) Plate stem:




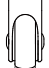



PT64



PT9275



PT90

Item No.	Type	Dia. 	W 	Mounting Height		Dynamic Loading capacity 
				plate stem 	thread stem 	
MSC75	non-brake	Ø75mm	28mm	129mm (for PT64)	122.5mm	60 kgs / per castor
MSC751	double brake					
MSC100	non-brake	Ø100mm	30mm	158mm (for PT90)	156mm (for PT9275)	70 kgs / per castor
MSC1001	double brake					
MSC125	non-brake	Ø125mm	32mm	183.5mm (for PT90)	181.5mm (for PT9275)	80 kgs / per castor
MSC1251	double brake					