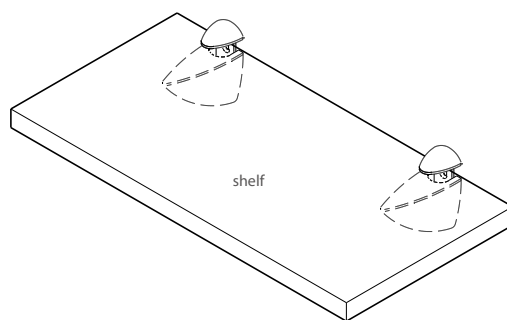
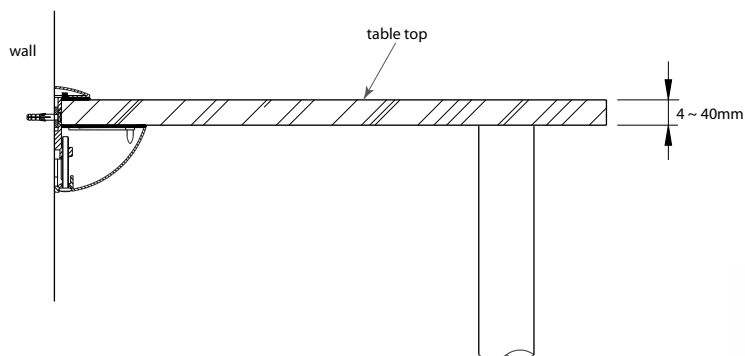


## 07-3 Glass Shelf Supports & Fittings

### Wall Shelf Gripper - Oval type

- \* For shelves and table tops of any material (wood, glass, ...) of 4 ~ 40mm thickness
- \* Material: zinc alloy
- \* Finish: satin chrome, satin nickel, polished chrome, gold plated or silver coated
- \* 2 pcs/pair



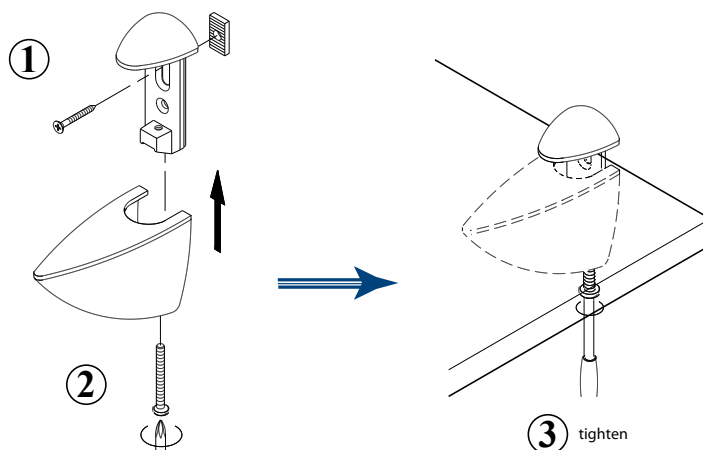
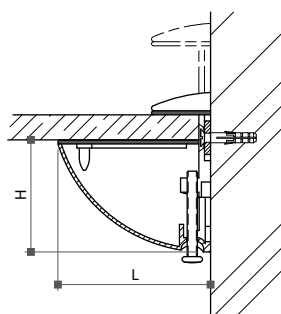
93931



93930



93932



Item No.	Dimension (LxH)	Shelf thickness
93930	56x45mm	4 ~ 16mm
93931	76x55mm	4 ~ 26mm
93932	107x71mm	4 ~ 40mm