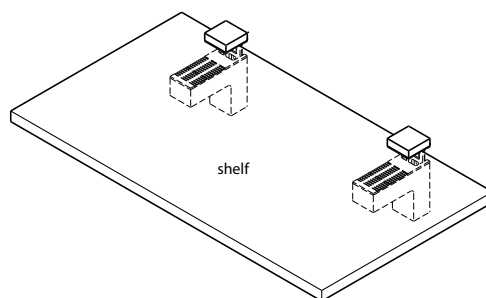
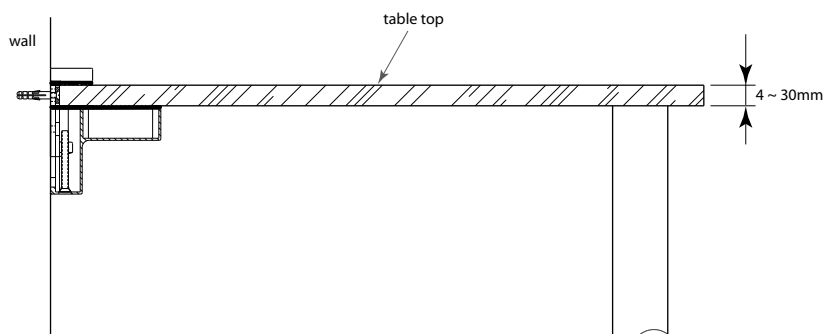


## 07-3 Glass Shelf Supports & Fittings

### Wall Shelf Gripper - Square type

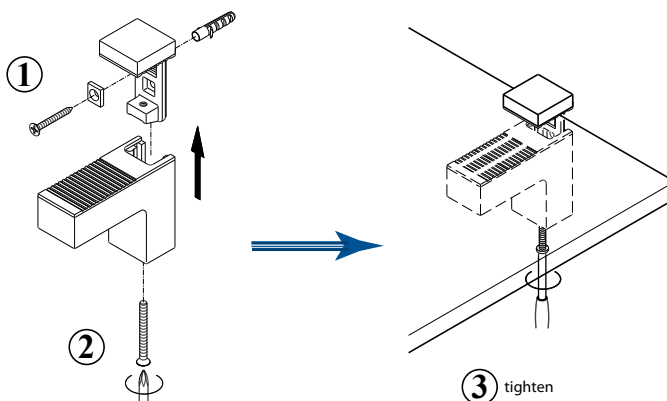
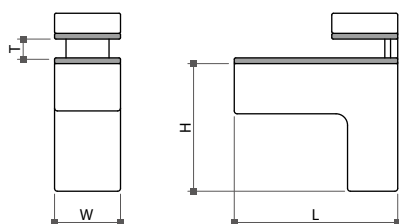
- \* For shelves and table tops of any material (wood, glass, ...) of 4 ~ 30mm thickness
- \* Material: zamak
- \* Finish: satin chrome, satin nickel plated or silver coated
- \* 2 pcs/pair



93980



93981



Item No.	Dimension (LxHxW)	Shelf thickness (T)
93980	57x44.5x24mm	4 ~ 18mm
93981	80x62x31mm	4 ~ 30mm