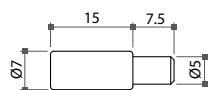


07-4 Shelf Supports & Fittings

58380 Steel Shelf Support

- * Material: steel
- * Finish: nickel plated
- * For Ø5mm drillhole

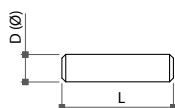


Item No.	Drillhole
58380	Ø5mm



Pin Shelf Support

- * Material: steel
- * Finish: nickel plated

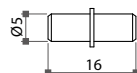


Item No.	Size (DxL)
58341	Ø5x25mm
58343	Ø5x16mm
58344	Ø5x45mm
58345	Ø6x40mm



58370 "Duplo" Shelf Support

- * Material: steel
- * Finish: nickel plated

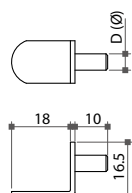


Item No.	Drillhole
58370	Ø5mm

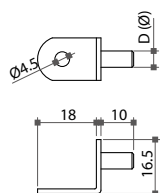


L Shelf Support

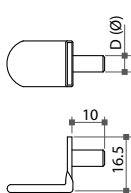
- * Material: steel
- * Finish: brass, antique copper, black or nickel plated



58300 / 58302



58331 / 58336
(with one screw hole)



58310 / 58314
(with vinyl coating)



58300 / 58302



58310 / 58314
(with vinyl coating)



58331 / 58336
(with one screw hole)

Item No.	Drillhole
58300	Ø1/4"
58302	Ø5mm
58331	Ø1/4"
58336	Ø5mm
58310	Ø1/4"
58314	Ø5mm