

# Slat Wall Mount

- Slat wall Mount Type
- Model : No arm, Single arm, Double arms
- Ball joint design (360° rotation, 30° tilt)
- Monitor weights up to 12 kgs
- Aluminum Die-Casting profile
- Cable management
- Monitor quick release mechanism
- 75/100 mm VESA bracket
- Anti-theft kit as option
- Front end height adjuster as an option



**88351**  
W901xD116~456xH194mm



**88321**  
W124xD456xH194mm



**88320**  
W124xD286xH164mm



**88350**  
W124xD116xH163mm

# Wall Mount

- Wall mount type/ Slat wall mount
- Arm type : No arm, Single arm, Double arms
- Ball joint design
- Aluminum Die-Casting profile
- Cable management
- Monitor quick release mechanism



**88700**  
W124xD456xH194mm

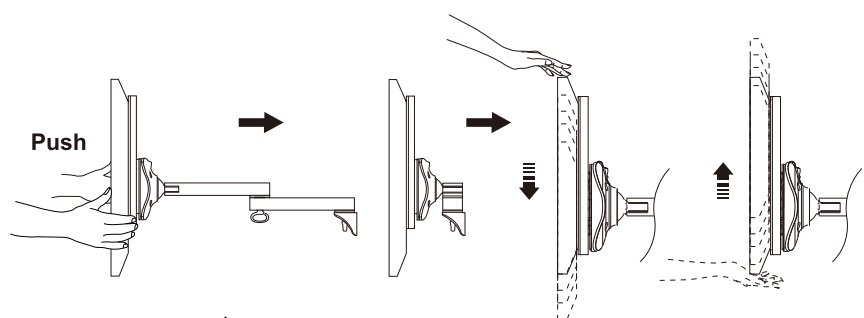


**88702**  
W124xD286xH164mm



**88701**  
W124xD116xH163mm

LCD/TV size	Max. Load Capacity	Pan	Rotation	Tilt	VESA	Quick Release	Lock (Anti-theft kit)	Front end height adjuster
≤ 24"	12 kg (26.4 lbs)	180°	360°	±30°	75x75mm 100x100mm	Yes	Option	Option



## runner

Front end height adjustment



- A front end height adjustment use an optimal solution for a health and comfortable work environment.
- Elevates monitor height to provide more comfort viewing posture.
- Easy adjust, 150mm height adjusts range.
- Aluminum construction