



05-1 Cam Locks
P. 092-094

05-2 Digital Locks
P. 095

05-3 Push Locks
P. 096-097

05-4 Aluminium Frame &
Drawer Locks
P. 098-101

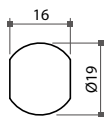
05-5 Plug Locks
P. 102-103

05-6 Glass Locks
P. 104-109

05-1 Cam Locks

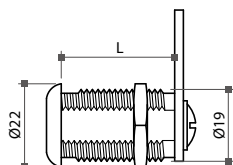
Cam Lock

- * Ø19mm drilling hole
- * Material: zinc alloy cylinder
- * Finish: chrome, black, brass or nickel plated
- * With a removable screw-fixing cam
- * 90° or 180° cam turn in left or right direction
- * Accessories: 1 pc of hex nut and 1 pc of fixing washer
- * Available in K/A (key alike), K/D (key different) and master key system



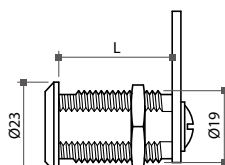
Optional housing shapes

OV type



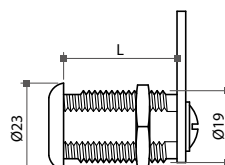
Item No.	L
68431	16mm
68432	22mm
68433	28mm
68434	35mm
68435	41mm

DM type



Item No.	L
68631	16mm
68632	22mm
68633	28mm

SS type

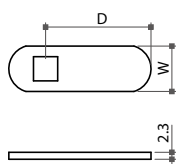


Item No.	L
68441	16mm
68442	22mm
68443	28mm
68444	35mm
68445	41mm

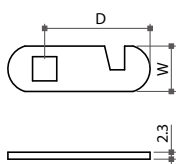
Optional cam types

- * 2.3mm thick steel zinc plated
- * Sizes can be specified

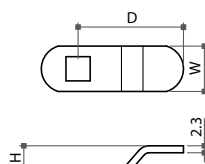
Straight type



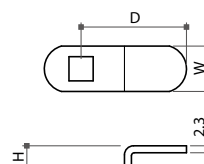
Hook type



Offset-R type



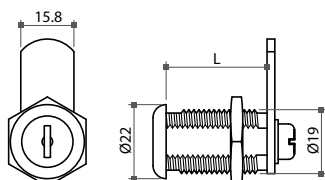
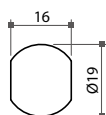
Offset-S type



05-1 Cam Locks

Plastic Cam Lock

- * Ø19mm drilling hole
- * Material: ABS plastic cylinder
- * Finish: chrome or black plated
- * With a removable screw-fixing cam
- * Available in K/A (key alike), K/D (key different) and master key system

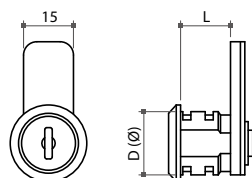


Item No.	L
68421	16mm
68422	22mm
68423	28mm



68621 Case Cam Lock

- * For metal cabinet
- * Material: zinc alloy
- * Finish: nickel plated
- * Accessory: 1 pc of spring clip

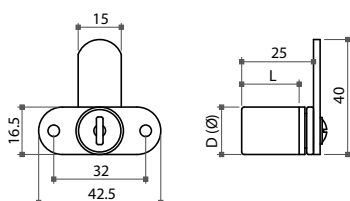


Item No.	Cylinder size (DxL)
68621	Ø19x15mm



68625 Cam Lock with Mounting Flange

- * Hook cam type
- * Material: zinc alloy
- * Finish: nickel, brass or black plated
- * Accessories: 1 pc of rosette and 1 pc of M3x10mm screw
- * Available in K/A (key alike), K/D (key different) and master key system



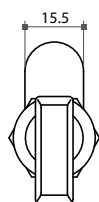
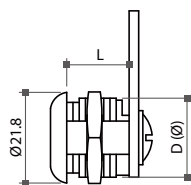
Item No.	Cylinder size (DxL)
68625	Ø16.5x20mm



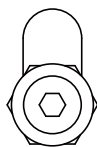
05-1 Cam Locks

Keyless Cam Lock

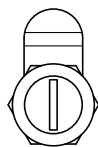
* Material: zinc alloy



Knob



Hex (M6)



Slot

Item No.	Cylinder size (DxL)	Type
69111	Ø19x15mm	Knob
69112	Ø19x15mm	Hex (M6)
69113	Ø19x15mm	Slot (2mm)



69111



69112



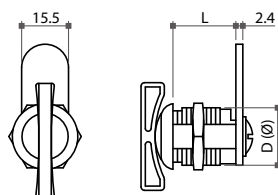
69113

Keyless Cam Lock

* Material: zinc alloy

* Optional cam rotations and lengths

* Turn-knob type

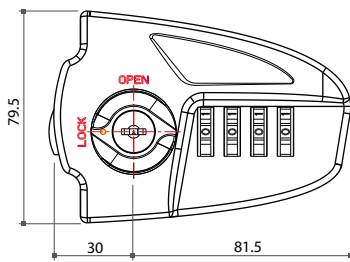


Item No.	Cylinder size (DxL)
69116	Ø19x16mm
69117	Ø19x22mm
69118	Ø19x29mm
69119	Ø19x41mm

05-2 Digital Locks

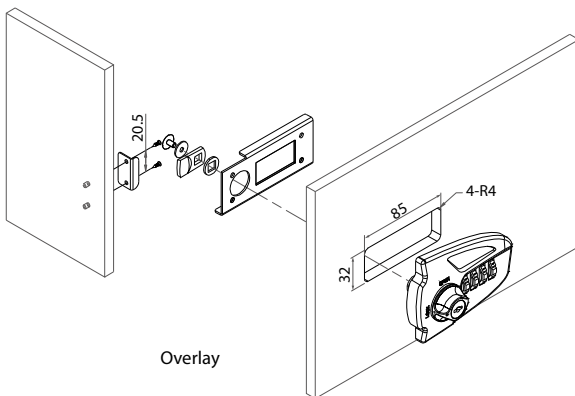
68413 Combination Lock for Personal Locker

- * 4-digit combination lock
- * Free code-programming
- * Master key for management control can be required
- * Operation:
 - 1) Make sure the plug is in "Open" position
 - 2) Open the door to put into personal belongings and close the door
 - 3) Program 4-digit code. Remember the code
 - 4) Turn the knob to "Lock" position. Change digits at random
 - 5) Door is locked

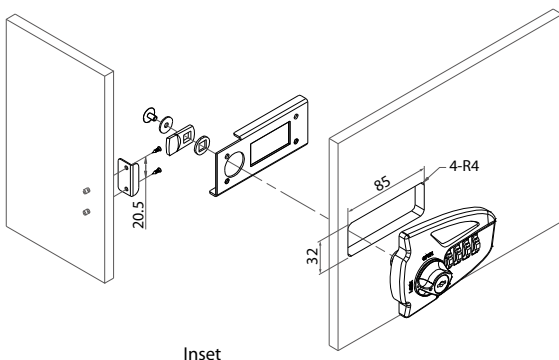


* The 4-digit combination lock is applicable to the following places: shopping mall storage lockers, school student lockers, golf club and swimming pool member and public lockers, office staff lockers and more

For Steel Cabinet

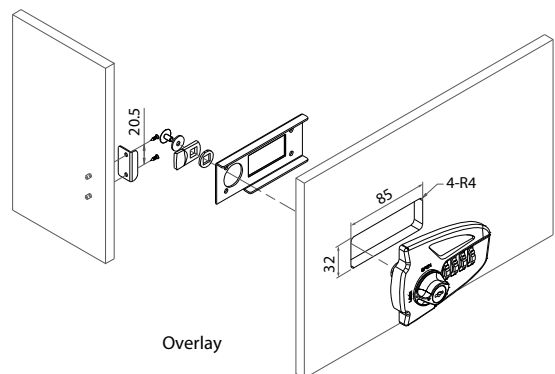


Overlay

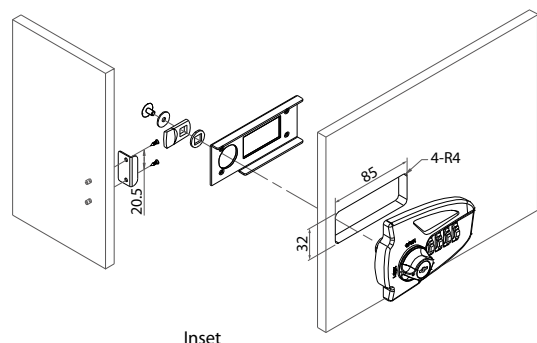


Inset

For Wooden Cabinet



Overlay



Inset

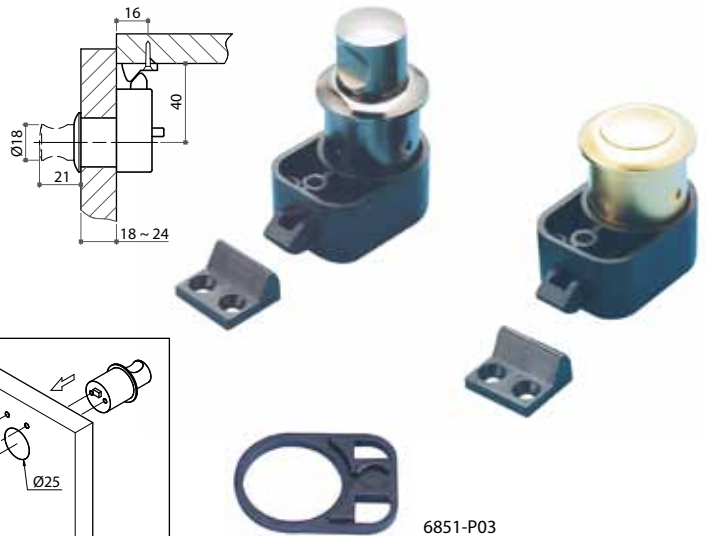
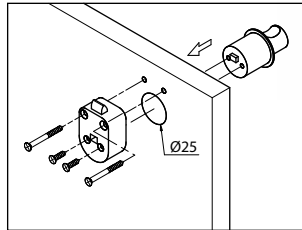
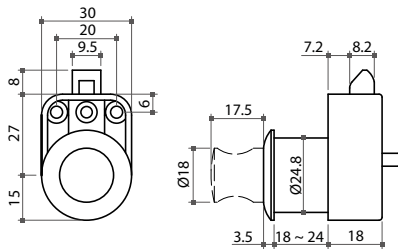
05-3 Push Locks

05

Locks

68510 Push Latch With Knob

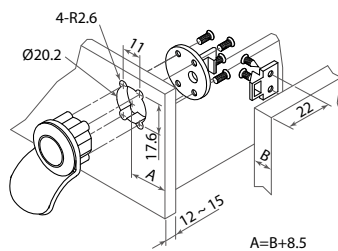
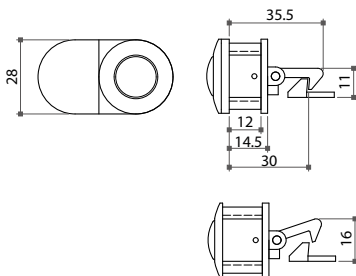
- * Material: plastic base with zinc alloy or plastic handle
- * Finish: gold, nickel, black nickel, matt nickel or matt gold
- * Accessory: 1 pc of plastic strike plate
- * Ø25mm drilling hole
- * For door of 18 ~ 24mm thickness
- * **6851-P03** 3mm spacer is required for 15 ~ 17mm thick door



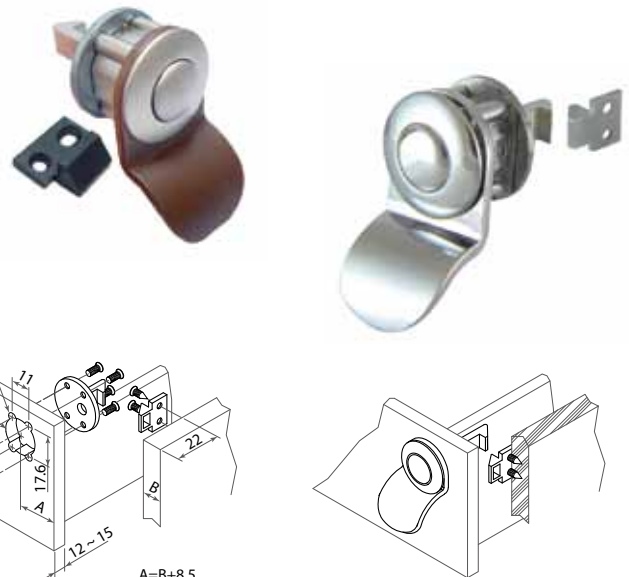
6851-P03

68470 Push Latch With Handle

- * Material: zinc alloy latch, soft plastic handle
- * Finish: gold, nickel, black nickel, matt nickel or matt gold
- * For door of 12 ~ 15mm thickness
- * Accessory: 1 pc of plastic strike plate
- * Close the cabinet door/drawer and it will be locked automatically
- * Hold the soft plastic handle and push the central button to open the cabinet door/drawer

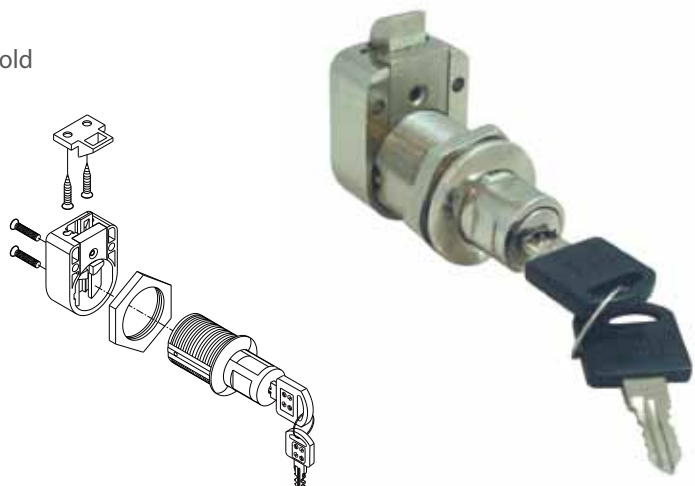
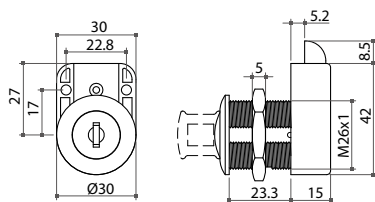


A=B+8.5



68480 Push Lock With Key

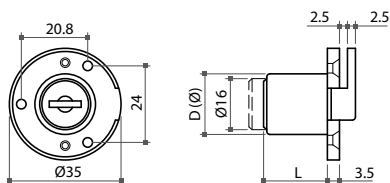
- * Material: zinc alloy
- * Finish: gold, nickel, black nickel, matt nickel or matt gold
- * With 2 keys



05-3 Push Locks

68930 Push Lock

- * For flap door
- * Material: zinc alloy
- * Finish: nickel, brass, black or gold plated
- * Accessories: 1 pc of rosette and 1 pc of L-type strike plate
- * Available in K/A (key alike), K/D (key different) and master key system

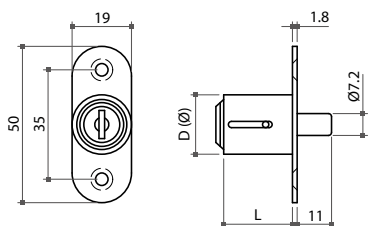


Item No.	Cylinder size (DxL)
68930	Ø19x21mm



68780 Push Lock

- * For wooden sliding door
- * Material: zinc alloy
- * Finish: nickel, brass, black or gold plated
- * Accessory: 1 pc of rosette
- * Available in K/A (key alike), K/D (key different) and master key system



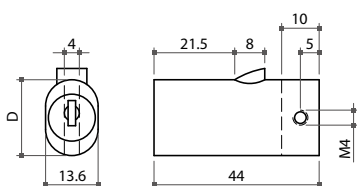
Item No.	Cylinder size (DxL)
68780	Ø19x22mm

* 30mm L. cylinder is also available



68790 Push Lock

- * For file cabinet
- * Material: zinc alloy
- * Finish: nickel, brass or black plated
- * Accessory: 1 pc of rosette
- * Available in K/A (key alike), K/D (key different) and master key system



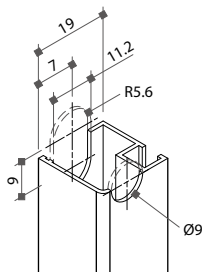
Item No.	Cylinder size (D)
68790	20.2mm



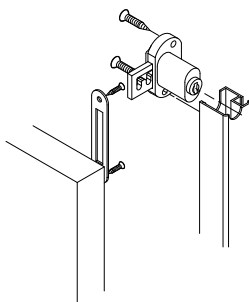
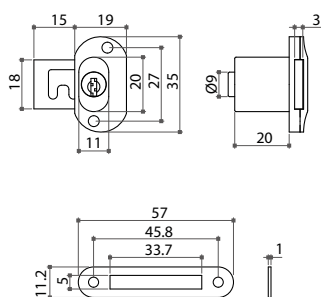
05-4 Aluminium Frame & Drawer Locks

Aluminium Frame Door Lock - For Swing Door

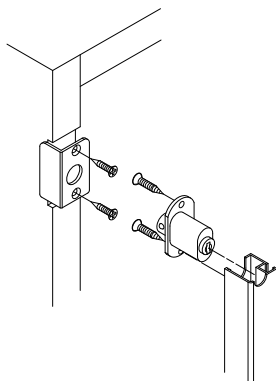
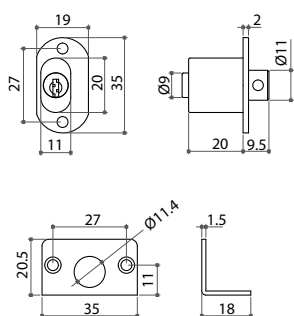
- * Material: zinc alloy
- * Compatible profile to fit on aluminium frame door
- * For single door or double doors



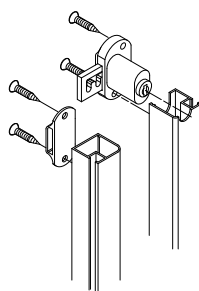
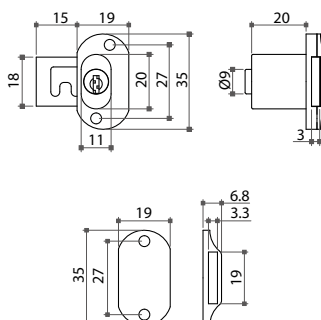
68300 Lock for single inset door



68301 Lock for single overlay door



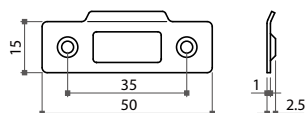
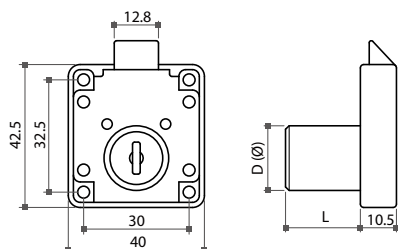
68302 Lock for double doors



05-4 Aluminium Frame & Drawer Locks

68590 Slam Lock

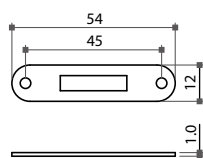
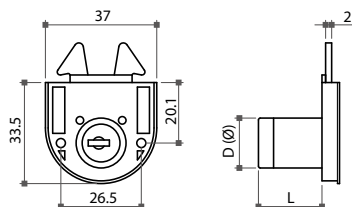
- * Material: zinc alloy
- * Finish: nickel, brass, black or gold plated
- * Accessories: 1 pc of rosette and 1 pc of strike plate
- * Available in K/A (key alike), K/D (key different) and master key system



Item No.	Cylinder size (DxL)
68590-22	Ø19x22mm
68590-30	Ø19x30mm

68542 Mortise Lock

- * For roller shutters
- * Material: cylinder in zinc alloy and lock case in plastic
- * Finish: nickel, brass, black or gold plated
- * Accessories: 1 pc of rosette and 1 pc of strike plate
- * Available in K/A (key alike), K/D (key different) and master key system

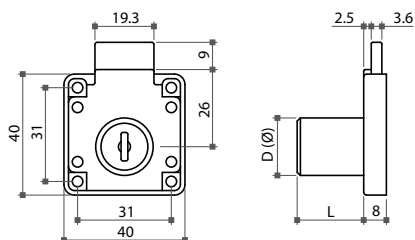
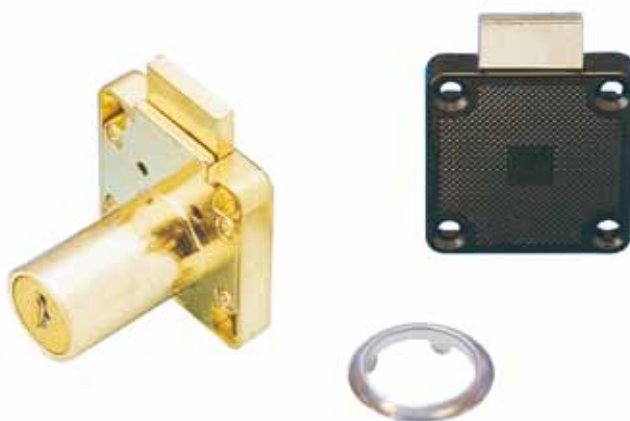


Item No.	Cylinder size (DxL)
68542	Ø16.5x21mm

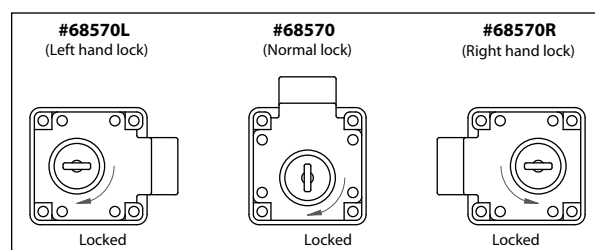
05-4 Aluminium Frame & Drawer Locks

68570 Drawer Lock

- * Material: zinc alloy
- * Optional models: normal, right hand or left hand
- * Finish: nickel, brass, black or gold plated
- * Accessory: 1 pc of rosette
- * Available in K/A (key alike), K/D (key different) and master key system

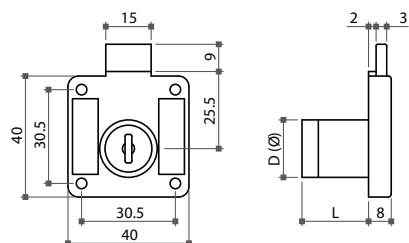


Item No.	Cylinder size (DxL)
68570-22	Ø19x22mm
68570-26	Ø19x26mm
68570-30	Ø19x30mm

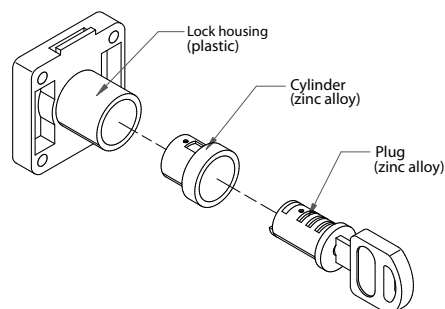


68530 Drawer Lock

- * Housing: plastic, black or nickel plated
- * Cylinder: zinc alloy, nickel
- * Plug: zinc alloy
- * Accessory: 1 pc of rosette
- * Available in K/A (key alike), K/D (key different)



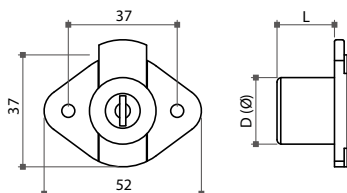
Item No.	Cylinder size (DxL)
68530-23	Ø19x23mm
68530-30	Ø19x30mm



05-4 Aluminium Frame & Drawer Locks

68560 Drawer Lock

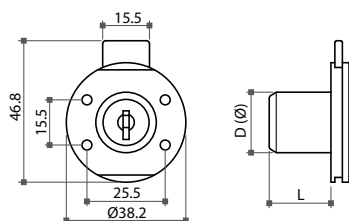
- * Material: plastic
- * Finish: nickel, brown, black or brass plated
- * Accessory: 1 pc of rosette



Item No.	Cylinder size (DxL)
68560	Ø21x22mm

Cupboard Lock

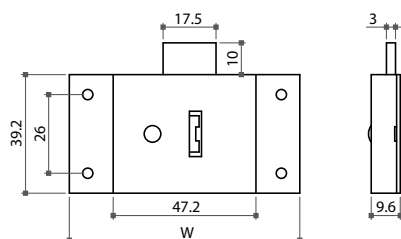
- * Material: zinc alloy
- * Finish: nickel, brass, black or gold plated
- * Accessories: 1 pc of rosette and 1 pc of strike plate
- * Available in K/A (key alike), K/D (key different) and master key system



Item No.	Cylinder size (DxL)
68580	Ø20x20.5mm
68588	Ø16.5x19.5mm

Cupboard Lock

- * Material: steel
- * Finish: brass plated



Item No.	W
68840	2-1/2" (63.5mm)
68841	2" (50.8mm)

05-5 Plug Locks

Plug Removable Furniture Lock

- * Eliminate key-coding consideration
- * Wide combination of various plugs, cylinders and locks

68000 Plug

- * With 250 different key numbers



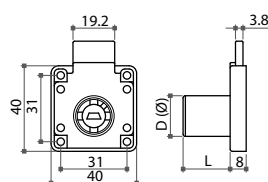
69000 Plug

- * With 10,000 different key numbers



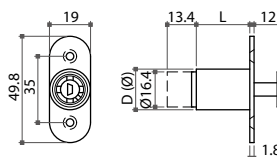
Optional housing types

68001 Drawer Lock



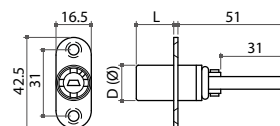
Item No.	Cylinder size (DxL)
68001-22	Ø19x22mm
68001-26	Ø19x26mm
68001-30	Ø19x30mm

68002 Sliding Door Push Lock



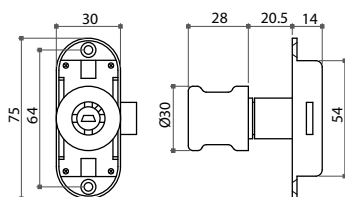
Item No.	Cylinder size (DxL)
68002	Ø19x25mm

68003 Front Central Lock



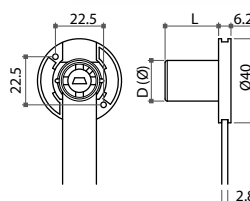
Item No.	Cylinder size (DxL)
68003	Ø16.5x17.5mm
68003-19	Ø19x17.5mm

68004 Rotating Bar Lock With Handle



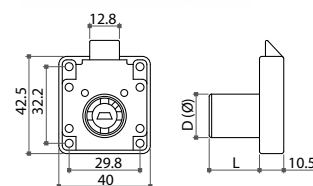
Item No.	Handle size
68004	Ø30x28mm

68005 Side Mount Central Lock



Item No.	Cylinder size (DxL)
68005	Ø19x25mm

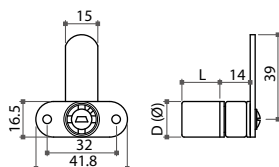
68006 Slam Lock



Item No.	Cylinder size (DxL)
68006-22	Ø19x22mm
68006-26	Ø19x26mm
68006-30	Ø19x30mm

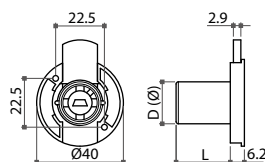
05-5 Plug Locks

68007 Cam Lock



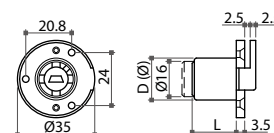
Item No.	Cylinder size (DxL)	Cam type
68007-SC	Ø16.5x17.5mm	straight cam
68007-OC	Ø16.5x17.5mm	offset cam

68008 Cupboard Lock



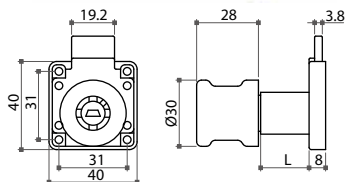
Item No.	Cylinder size (DxL)
68008	Ø19x25mm

68010 Push Lock



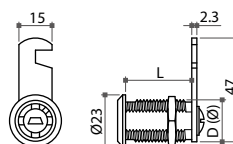
Item No.	Cylinder size (DxL)
68010	Ø19x25mm

68011 Handle Lock



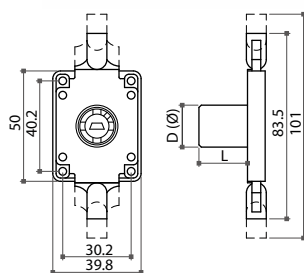
Item No.	L
68011-22	22mm
68011-26	26mm
68011-30	30mm

68012 Screw-fixing Cam Lock



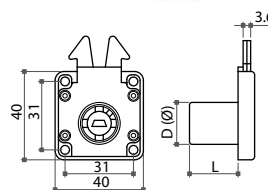
Item No.	Cylinder size (DxL)
68012-26	Ø19x26mm
68012-30	Ø19x30mm

68013 Extending Bar Lock



Item No.	Cylinder size (DxL)
68013	Ø19x22mm

68014 Mortise Lock

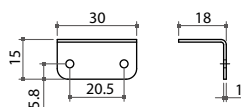
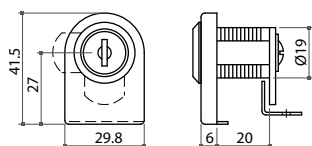


Item No.	Cylinder size (DxL)
68014-22	Ø19x22mm
68014-26	Ø19x26mm
68014-30	Ø19x30mm

05-6 Glass Locks

68680 Single Glass Door Lock

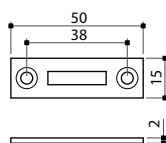
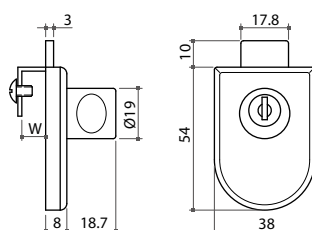
- * Material: zinc alloy cylinder and steel front plate
- * For glass of 5 ~ 7mm thickness
- * Accessory: 1 pc of L-type steel strike plate
- * Available in K/A (key alike), K/D (key different) and master key system



Item No.	Glass thickness
68680	5 ~ 7mm

Glass / Wooden Door Lock

- * Material: zinc alloy
- * Finish: chrome, black or gold plated
- * Cylinder with handle function
- * Accessory: 1 pc of steel strike plate
- * Available in K/A (key alike), K/D (key different) and master key system

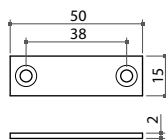
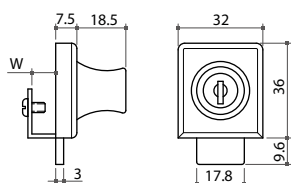


Item No.	W	Glass thickness
64081	9mm	5 ~ 6mm
64082	12.2mm	8 mm
64083	15mm	10 ~ 12mm

05-6 Glass Locks

U-Knob Glass Door Lock, for single door

- * Material: zinc alloy
- * No boring on glass door
- * Cylinder with handle function
- * Accessory: 1 pc of steel strike plate
- * Available in K/A (key alike), K/D (key different) and master key system

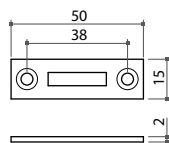
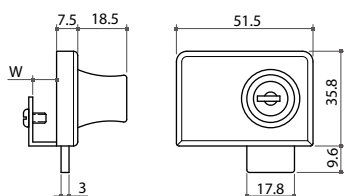


Item No.	W	Glass thickness
64075	9mm	5 ~ 6mm
64078	12mm	8mm



U-Knob Glass Door Lock, for double door

- * Material: zinc alloy
- * No boring on glass door
- * Cylinder with handle function
- * Accessory: 1 pc of steel strike plate
- * Available in K/A (key alike), K/D (key different) and master key system



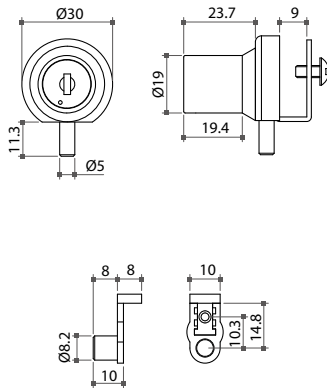
Item No.	W	Glass thickness
64175	9mm	5 ~ 6mm
64178	12mm	8mm



05-6 Glass Locks

68407 Swing Glass Door Lock, for single door

- * Material: zinc alloy
- * Finish: chrome, black or gold plated
- * For glass of 5 ~ 6mm thickness
- * Accessories: 2 pcs of washer and 1 pc of stop socket with pin hole locator
- * Available in K/A (key alike), K/D (key different) and master key system

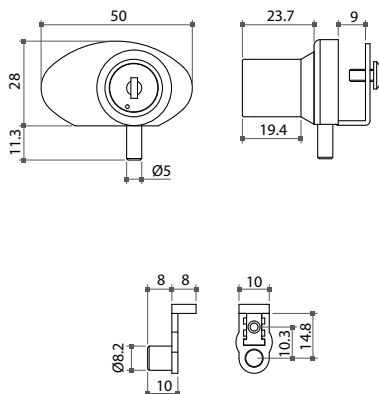


Item No.	Glass thickness
68407	5 ~ 6mm

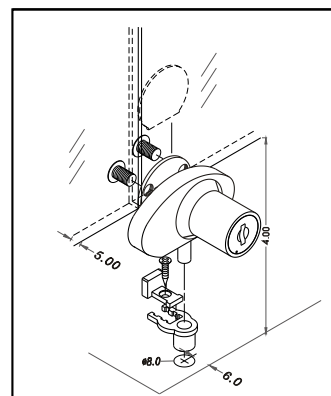


68417 Swing Glass Door Lock, for double door

- * Material: zinc alloy
- * Finish: chrome, black or gold plated
- * For glass of 5 ~ 6mm thickness
- * Accessories: 2 pcs of washer and 1 pc of stop socket with pin hole locator
- * Available in K/A (key alike), K/D (key different) and master key system



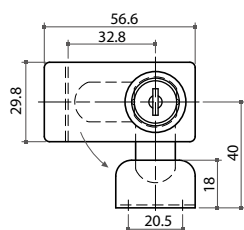
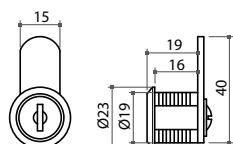
Item No.	Glass thickness
68417	5 ~ 6mm



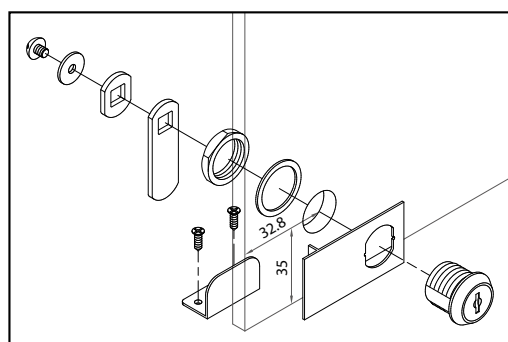
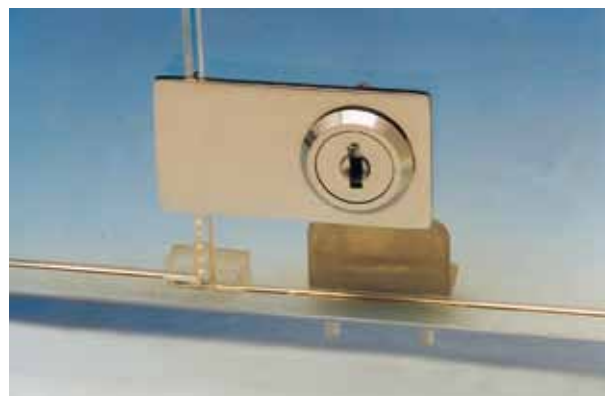
05-6 Glass Locks

68670 Double Glass Door Lock

- * Material: zinc alloy cylinder and steel front plate
- * For glass of 5 ~ 7mm thickness
- * Accessory: 1 pc of L-type steel strike plate
- * Available in K/A (key alike), K/D (key different) and master key system

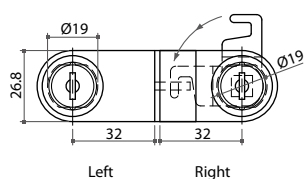
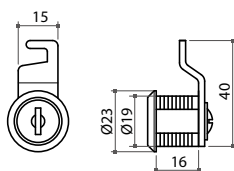


Item No.	Glass thickness
68670	5 ~ 7mm

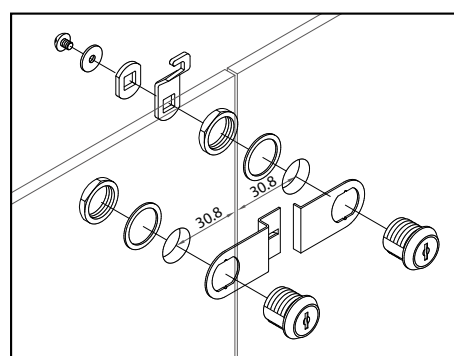


68660 Double Glass Door Lock

- * Material: zinc alloy cylinder and steel front plate
- * Left part with decorative cylinder and steel front plate
- * Right part with lock cylinder and offset hook cam
- * Available in K/A (key alike), K/D (key different) and master key system



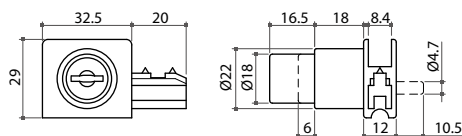
Item No.	Glass thickness
68660	5 ~ 6mm



05-6 Glass Locks

68460 Sliding Glass Door Push Lock

- * Material: zinc alloy
- * Finish: chrome plated
- * For glass of 5 ~ 6mm thickness

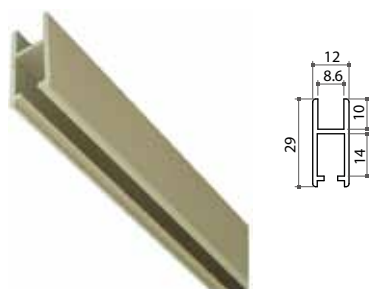


Item No.	Glass thickness
68460	5 ~ 6mm

Rail and Track series

68701A Glass Rail

- * Material: aluminium
- * Length: 2, 2.5 or 4 meters



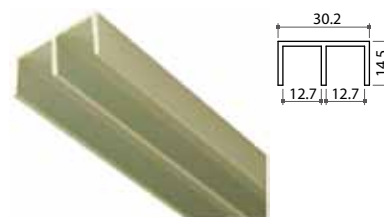
68705 Bottom Track

- * Material: aluminium
- * Length: 2, 2.5 or 4 meters



68706 Top Track

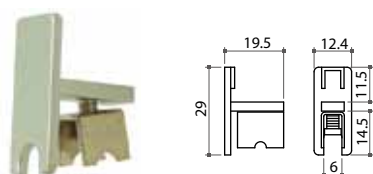
- * Material: aluminium
- * Length: 2, 2.5 or 4 meters



Suspension Accessories

68703A End Cap

- * Material: zinc alloy



68702 Splint

- * Material: ABS



68707 Silencer

- * Material: ABS
- * Size: 30 ± 0.5mm



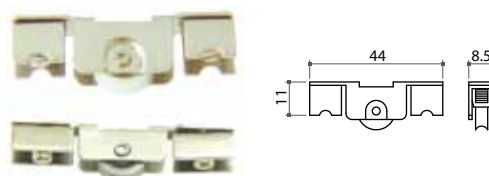
Pull and Roller

68708 End Finger Pull

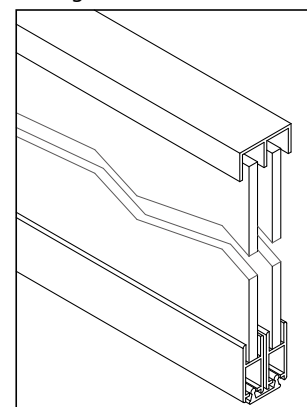


68704A Roller

- * Material: nylon wheel, steel housing



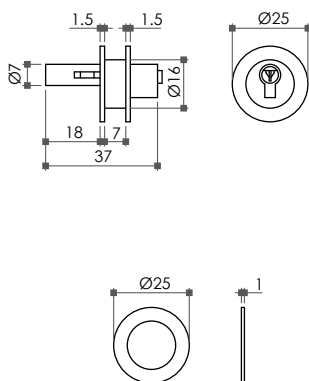
Sliding door for showcase



05-6 Glass Locks

68760 Sliding Glass Door Lock

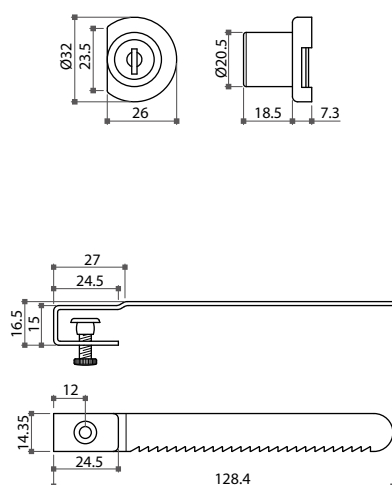
- * Material: brass cylinder, nickel plated, and steel key chrome plated
- * For glass of 5 ~ 7mm thickness
- * Accessories: 2 pcs of rubber washer and 2 pcs of screw
- * Available in K/A (key alike), K/D (key different)



Item No.	Glass thickness
68760	5 ~ 7mm

Sliding Glass Door Lock

- * Material: zinc alloy and steel
- * Finish: chrome, black or gold plated



Item No.	Bar length
68724	4-1/2"
68725	5-1/2"
68726	5"

